



The Women's Oxford Shirt

Medium Fit XS → 3XL 190 GSM

Description

- Point collar with single needle topstiches
- Collar stand
- Front placket with single needle topstiches on each side
- Forwarded shoulder
- Back yoke with box pleat
- Inside yoke in self fabric
- Set-in sleeves
- Sleeve placket with one button
- Sleeve cuff with two buttons
- Rounded cuff corners
- Double pleats at cuff seam

Composition

Shell - Oxford
100% Cotton - Organic Ring Spun Combed - 190.0 GSM
Garment washed

Care instruction

Wash similar colours together, no ironing on print, wash and iron inside out.



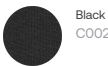
Country of origin

Weaving : Bangladesh
Dyeing : Bangladesh
Assembly : Bangladesh

Whites



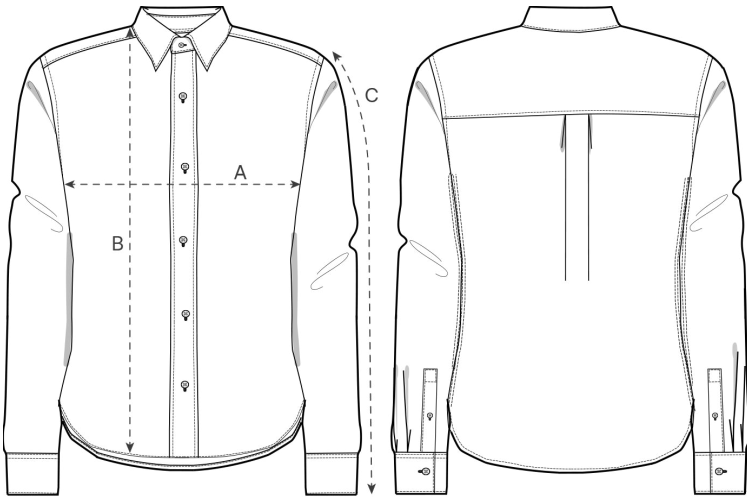
Colors



Shirt Fabric



Size Guide



Front

Back

Measurement in cm	XS	S	M	L	XL	XXL	3XL
A - Half Chest	47	50	53	56	59	62	0
B - Body Length	64.8	66.5	68.5	70.5	72.5	74.5	0
C - Sleeve Length	58.5	59	60	61	62	63	0

Packing

Sizes	XS	S	M	L	XL	XXL
Pieces / bag	5	5	5	5	5	5
Pieces / box	25	25	25	25	25	25