



## The Men's Denim Shirt

### Medium Fit

**S → 5XL**

235 GSM

### Description

Button down collar with single needle topstiches

Collar stand

Front placket single needle topstitches on each side

Forwarded shoulder

Back yoke

Inside yoke in self fabric

### Set-in sleeves

Sleeve placket with one button

Cuff with two buttons

Rounded cuff corners

Double pleats at cuff seam

Faded look on all seams due to garment washing

Indigo yarn dyed product, each garment may vary in appearance, colour may bleed, follow our care label

Read carefully print recommendations

## Composition

Shell - Woven denim

100% Cotton - Organic Ring Spun Combed - 235.0 GSM

Garment washed

### Care instruction

Wash similar colours together, no ironing on print, wash and iron inside out.



## Country of origin

Weaving : Bangladesh

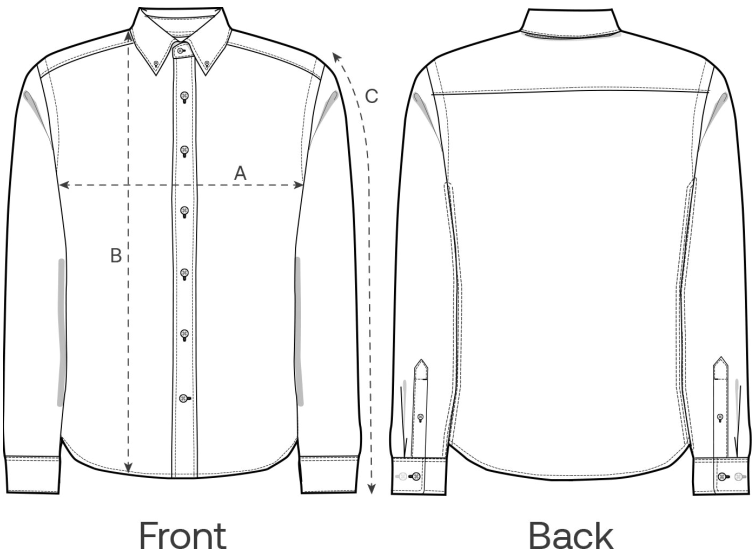
## Dyeing : Bangladesh

Assembly : Bangladesh

Colors



Size Guide



Measurement in cm	S	M	L	XL	XXL	3XL	4XL	5XL
A - Half Chest	53.5	56	60	64	68	72	0	0
B - Body Length	73.8	75	77	79	81	83	0	0
C - Sleeve Length	66	66.5	67.5	68.5	69.5	70.5	0	0

Packing

Sizes	S	M	L	XL	XXL	3XL
Pieces / bag	5	5	5	5	5	5
Pieces / box	25	25	25	25	25	15