



## The Women's Fitted Tank Top

Fitted XS → XXL 180 GSM

### Description

Sleeveless  
1X1 Ribs binding at collar and armhole  
Overlock at back neck  
Twin needles topstitches at hem

### Composition

Shell - Single Jersey  
100% Cotton - Organic Carded - 180.0 GSM  
Panel washed

### Care instruction

Wash similar colours together, no ironing on print, wash and iron inside out.



### Country of origin

Weaving : Bangladesh  
Dyeing : Bangladesh  
Assembly : Bangladesh

Whites

-  White  
C001
-  Natural  
Raw  
C054

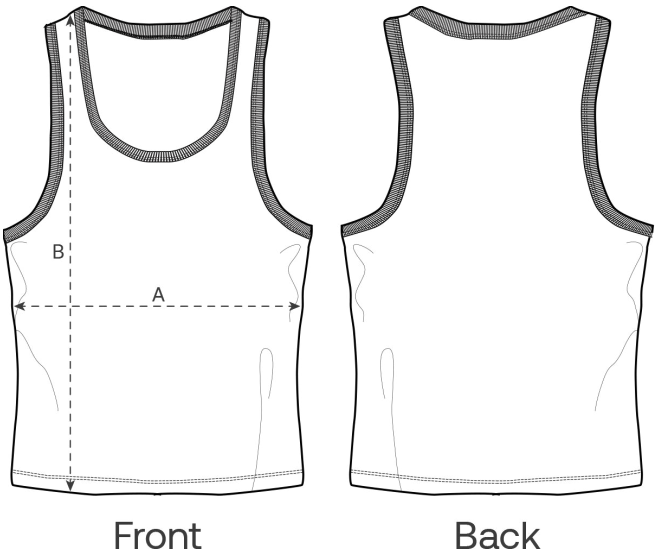
Colors

-  Black  
C002
-  Blue Soul  
C149
-  Aloe  
C089
-  French  
Navy  
C727
-  Cotton Pink  
C005

Essential Heathers

-  Cool  
Heather  
Grey  
C146

Size Guide



Measurement in cm	XS	S	M	L	XL	XXL
A - Half Chest	33.5	36.5	39.5	42.5	45.5	49.5
B - Body Length	58	61	63	65	67	69

Packing

Sizes	XS	S	M	L	XL	XXL
Pieces / bag	5	5	5	5	5	5
Pieces / box	100	100	100	100	100	100