



The women's zip thru hoodie sweatshirt

Medium Fit XS → XXL 300 GSM

Description

- Set-in sleeves
- Dropped shoulders
- Double layered hood in self fabric
- Flat drawcord in matching body colour
- Embroidered eyelet
- Covered metal zipper at center front
- 1X1 ribs at collar, sleeves cuffs and bottom hem
- 2 needles topstitches on all seams
- Inside gros grain back neck tape
- Self fabric halfmoon at back neck

Composition

Shell - Brushed  
100% Cotton - Organic Ring Spun Combed - 300.0 GSM  
Fabric washed

Care instruction

Wash similar colours together, no ironing on print, wash and iron inside out.



Country of origin

Weaving : Bangladesh  
Dyeing : Bangladesh  
Assembly : Bangladesh

Whites



White  
C001



Natural  
Raw  
C054

Colors



Black  
C002



Bubble Pink  
C129



Blue Ice  
C728



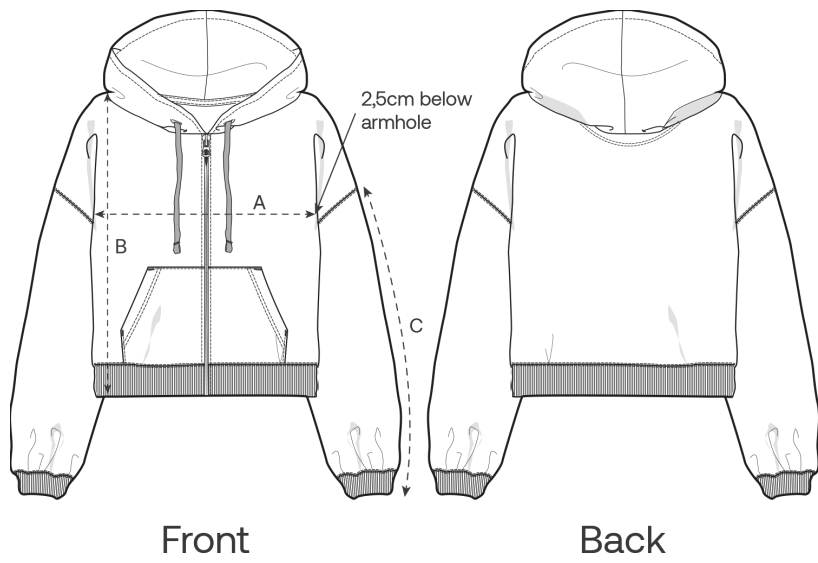
French  
Navy  
C727

Essential Heathers



Cool  
Heather  
Grey  
C146

Size Guide



Measurement in cm	XS	S	M	L	XL	XXL
A - Half Chest	57	60	63	66	69	73
B - Body Length	54	57	59	61	63	65
C - Sleeve Length	46	47.5	49	50.5	52	52

Packing

Sizes	XS	S	M	L	XL	XXL
Pieces / bag	5	5	5	5	5	5
Pieces / box	20	20	20	20	20	20