



Relaxed Fit

350 GSM

- Set-in sleeve
- Double layered hood in self fabric
- Flat drawcords in matching body colour with metal tipping
- Metal eyelets
- Inside herringbone back neck tape
- Self fabric half moon at back neck
- Single needle topstitch at neckline
- 2x2 rib at sleeve hem and bottom hem
- Armhole, sleeve hem, and bottom hem with twin needle topstitch
- Kangaroo pocket at front

Shell - Brushed
85% Cotton - Organic Ring Spun Combed, 15% Polyester - Recycled - 350.0 GSM
Fabric washed, Light sueded

Wash similar colours together, do not iron on print, wash and iron inside out.

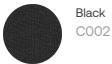


Weaving : Bangladesh
Dyeing : Bangladesh
Assembly : Bangladesh

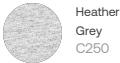
Whites



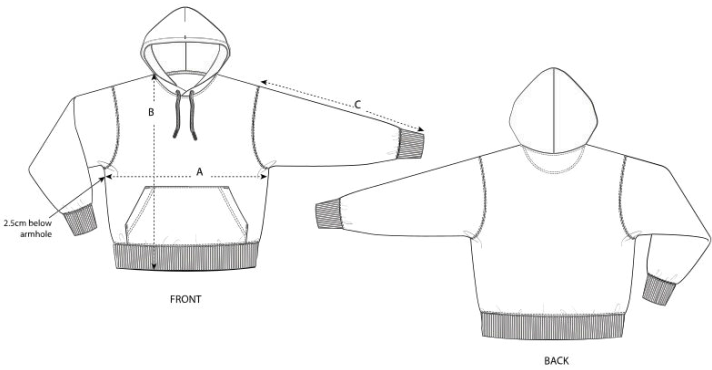
Colors



Essential Heathers



Size Guide



Measurement in cm	XXS	XS	S	M	L	XL	XXL	3XL
A - Half Chest	51.5	54	56.5	59	62	65	68	71
B - Body Length	62	63	66	70	72	74	76	79
C - Sleeve Length	57.5	58.5	61.5	64	65.5	67	68.5	68.5

Packing

Sizes	XXS	XS	S	M	L	XL	XXL	3XL
Pieces / bag	5	5	5	5	5	5	5	5
Pieces / box	10	20	20	20	20	20	20	10