



The Iconic Women's Mid Lightweight Polo

Fitted XS → 3XL\* 185 GSM

Description

- Set-in sleeve
- Flat knit rib on collar and sleeve hem
- Inside heavy single jersey back neck tape
- Front inserted placket with 2 buttons in matching body colour
- Slit and bartack finish at side seam hem
- Single needle topstitch at shoulder seams
- Bottom hem with narrow double needle topstitch

Composition

Shell - Piqué  
100% Cotton - Organic Ring Spun Combed - 185.0 GSM  
Panel washed

Care instruction

Wash similar colours together, no ironing on print, wash and iron inside out.



Country of origin

Weaving : Bangladesh  
Dyeing : Bangladesh  
Assembly : Bangladesh



Whites



White  
C001



Natural  
Raw  
C054

Colors



New

Verdant  
Green  
C137



Black  
C002



Anthracite  
C253



Bottle  
Green  
C224



New

India Ink  
Grey  
C715



Caribbean  
Blue  
C724



Ocean  
Depth  
C710



Khaki  
C223



Sky blue  
C232



Royal Blue  
C230



French  
Navy  
C727



Red  
C004



Burgundy  
C244



Cotton Pink  
C005

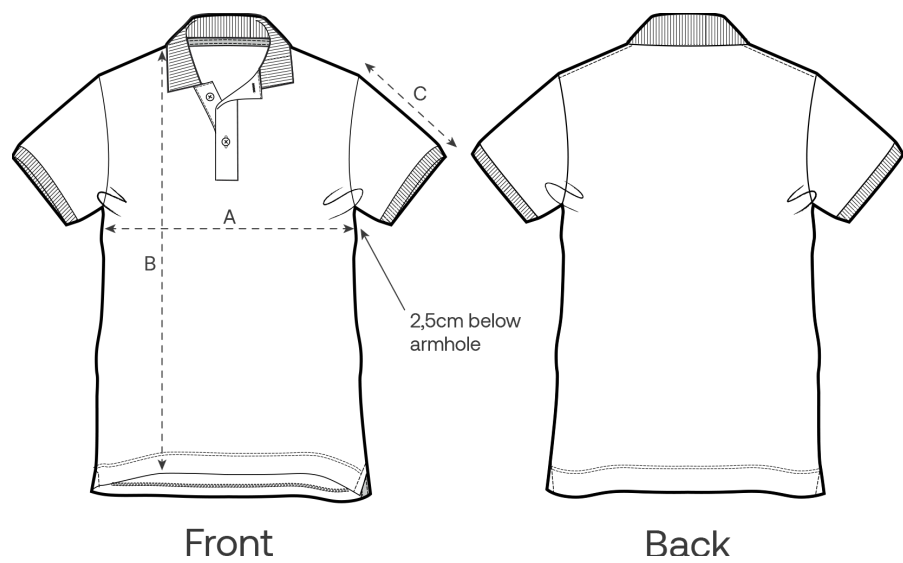
Essential Heathers



Heather  
Grey  
C250

more information on the next page →

Size Guide



Measurement in cm	XS	S	M	L	XL	XXL	3XL
A - Half Chest	42	45	48	51	55	59	0
B - Body Length	60	62	64	66	68	70	0
C - Sleeve Length	18.5	19	19.5	20	20.5	21	0

Packing

Sizes	XS	S	M	L	XL	XXL
Pieces / bag	5	5	5	5	5	5
Pieces / box	50	50	50	50	50	50