



The Unisex Vintage Mid-light Polo

Fitted

XXS → 3XL

185 GSM

Description

- Set-in sleeve
- Flat knit rib on collar and sleeve hem
- Inside heavy single jersey back neck tape
- Front inserted placket with 2 buttons in matching body colour
- Slit and bartack finish at side seam hem
- Single needle topstitch at shoulder seams
- Bottom hem with narrow double needle topstitch

Composition

Shell - Piqué
100% Cotton - Organic Ring Spun Combed - 185.0 GSM
Garment washed, Garment dyed

Care instruction

Wash similar colours together, no ironing on print, wash and iron inside out.



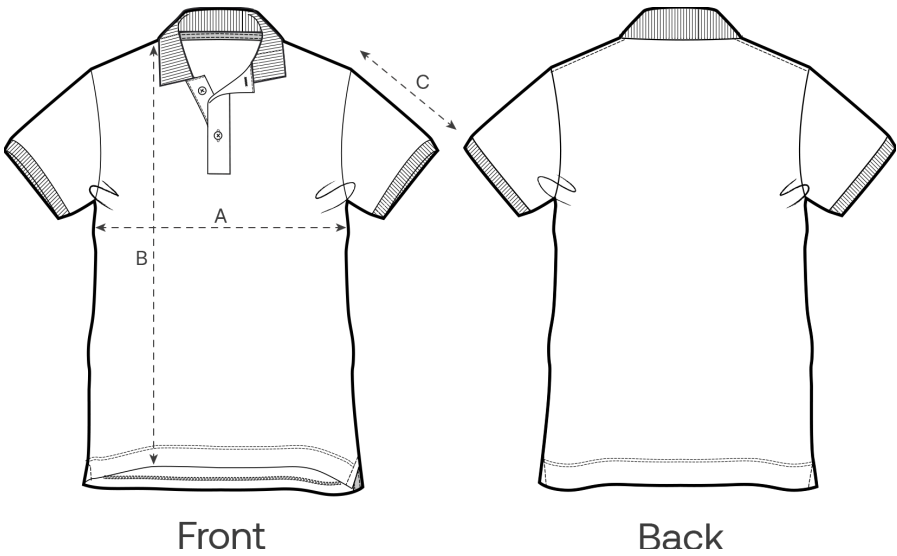
Country of origin

Weaving : Bangladesh
Dyeing : Bangladesh
Assembly : Bangladesh

Colors



Size Guide



| Measurement in cm | XXS | XS | S | M | L | XL | XXL | 3XL |
|-------------------|------|------|----|------|----|------|-----|------|
| A - Half Chest | 43 | 45 | 48 | 51 | 54 | 57 | 61 | 65 |
| B - Body Length | 61 | 64 | 68 | 72 | 74 | 76 | 78 | 80 |
| C - Sleeve Length | 17.5 | 18.5 | 20 | 21.5 | 22 | 22.5 | 23 | 23.5 |

Packing

| Sizes | XXS | XS | S | M | L | XL | XXL | 3XL |
|--------------|-----|----|----|----|----|----|-----|-----|
| Pieces / bag | 1 | 1 | 1 | 1 | 1 | 1 | 1 | 1 |
| Pieces / box | 25 | 50 | 50 | 50 | 50 | 50 | 50 | 25 |