



The women's body warmer

Fitted XS → XXL 75 GSM

Description

- Sleeveless
- High collar
- Reverse nylon zip at center front
- Zipped welt pockets with extra grosgrain puller
- Elastic tape binding at armhole
- Fully quilted
- Side panels for better shape
- Inside seams with binding finish
- Bottom hem with adjustable plastic stopper and elastic cord

Composition

- Shell - Plain Weave
- 100% Polyester - Recycled - 75.0 GSM
- Fluorine-free DWR
- Padding
- 100% Polyester - Recycled -
- Lining - Plain Weave
- 100% Polyester - Recycled
- Fluorine-free DWR

Care instruction

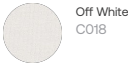
Wash similar colours together, no ironing, wash inside out. Close all zips before washing.



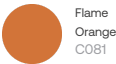
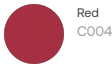
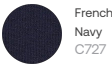
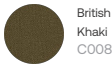
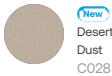
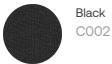
Country of origin

- Weaving : China
- Dyeing : China
- Assembly : Bangladesh or China

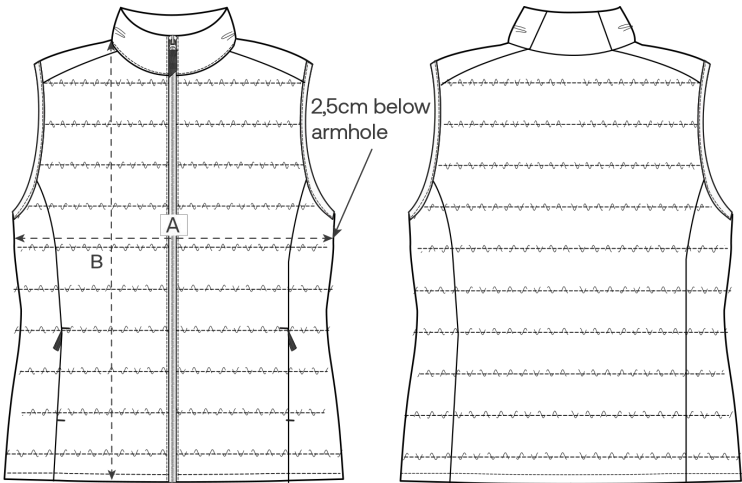
Whites



Colors



Size Guide



Front

Back

Measurement in cm	XS	S	M	L	XL	XXL
A - Half Chest	47	50	53	56	59	62
B - Body Length	58	60	62	64	66	68

Packing

Sizes	XS	S	M	L	XL	XXL
Pieces / bag	5	5	5	5	5	5
Pieces / box	10	10	10	10	10	10